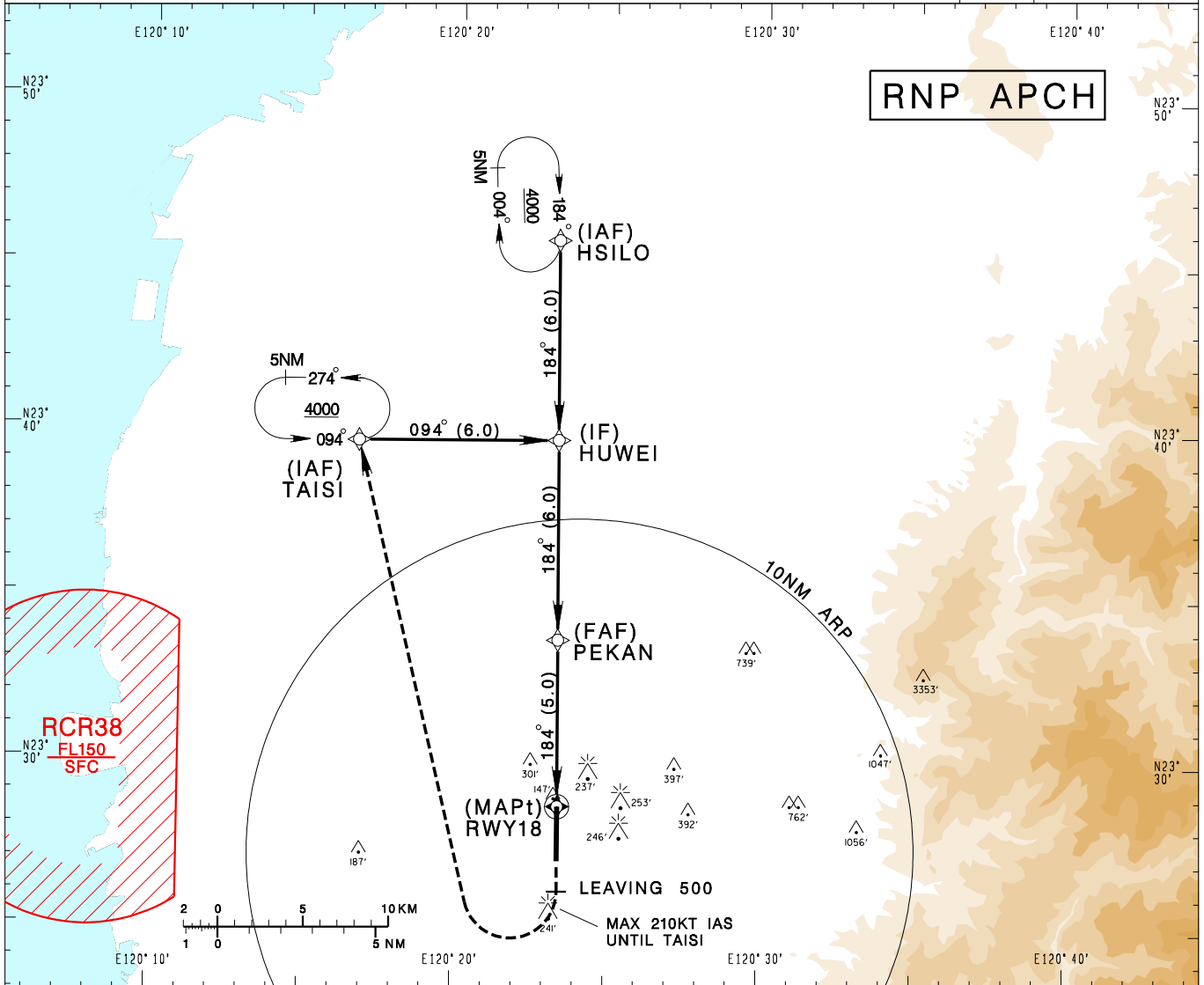


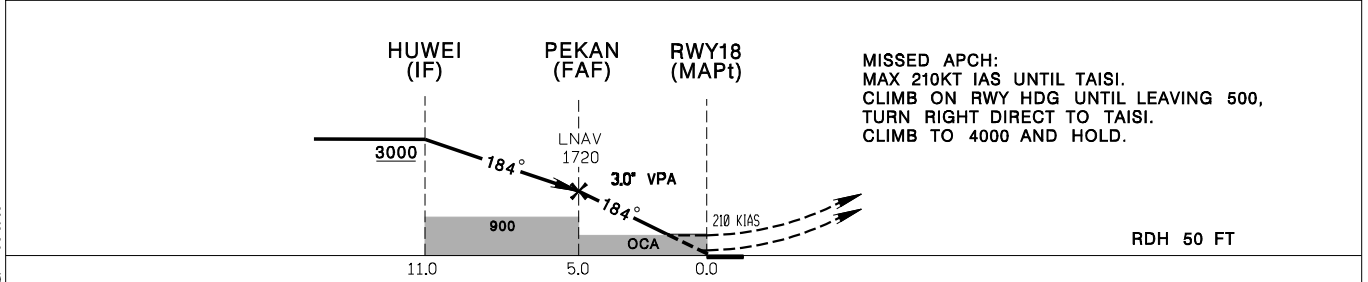
**嘉義機場**  
CHIAYI AD

RCKU  
RNP RWY18

KAOHSIUNG APP 120.6 301.0		CHIAYI TWR 118.6 236.6 275.8		VAR 4° W-2023 	 MSA ARP 25NM
Apt Elev: 85'	Rwy18 THR Elev: 75'	Trans Level: FL130	Trans Alt: 11,000'		
BEARINGS ARE MAGNETIC; DISTANCES ARE NAUTICAL MILES; ELEVATIONS, HEIGHTS IN FEET					



5	4	3	2	1.2	DIST (NM) to THR 18
PEKAN					DIST (NM) to Next WPT
1720	1410	1090	770	510	ADVISORY ALT



CATEGORY	MINIMA (OCA IN FT, VIS IN M, OCH IN FT)			
	A	B	C	D
LNAV/VNAV	443/1700 368	443/1700 368	443/1700 368	443/1700 368
LNAV	500/1700 425	500/1700 425	500/2000 425	500/2000 425

NOTE  
1. CIVIL AIRCRAFT USE WEST TRAFFIC CIRCUIT.  
2. BARO-VNAV NOT AUTHORIZED BELOW 0° C.  
3. ATS SURVEILLANCE REQUIRED WHEN RCR38 IN USE.

CHANGES: UPDATE MAG VAR.